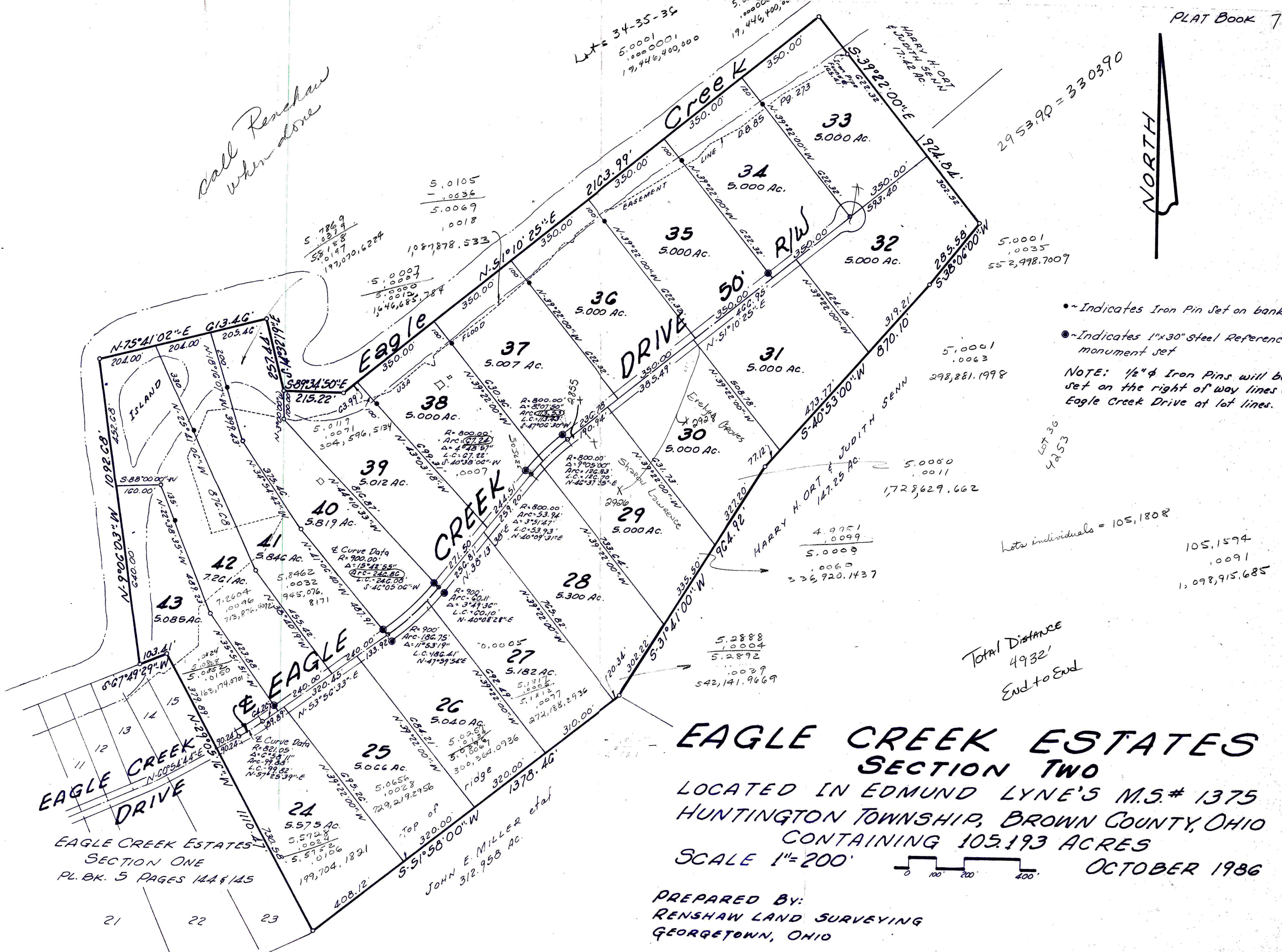
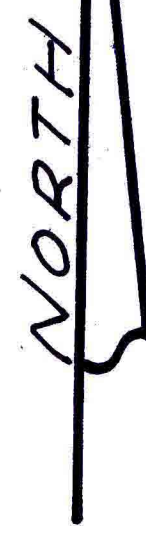


call Renshaw when done



2953.90 = 330390



- Indicates Iron Pin Set on bank.
 - Indicates 1"x30" steel Reference monument set
- NOTE: 1/2" φ Iron Pins will be set on the right of way lines of Eagle Creek Drive at lot lines.

lots individuals = 105,180.8

105,1594
.0091
1,098,915.685

Total Distance
4932'
End to End

EAGLE CREEK ESTATES
SECTION TWO
 LOCATED IN EDMUND LYNE'S M.S.# 1375
 HUNTINGTON TOWNSHIP, BROWN COUNTY, OHIO
 CONTAINING 105.193 ACRES
 SCALE 1"=200'



OCTOBER 1986

PREPARED BY:
 RENSHAW LAND SURVEYING
 GEORGETOWN, OHIO

EAGLE CREEK ESTATES
 SECTION ONE
 PL. BK. 5 PAGES 144 & 145

21 22 23